



The Anaplan User Experience

Enterprise-wide transformation begins with an enterprise-wide conversation

As business dynamics accelerate, it's time for your plans to keep up and it begins with a planning experience unlike any other. The Anaplan platform is the industry's first enterprise planning cloud that can connect people, data, and plans across the entire organization. Leveraging the speed and scale of a purpose-built planning platform, the platform

offers businesses an engaging, interactive, and personalized user experience (UX) that transforms decision-making across the enterprise.

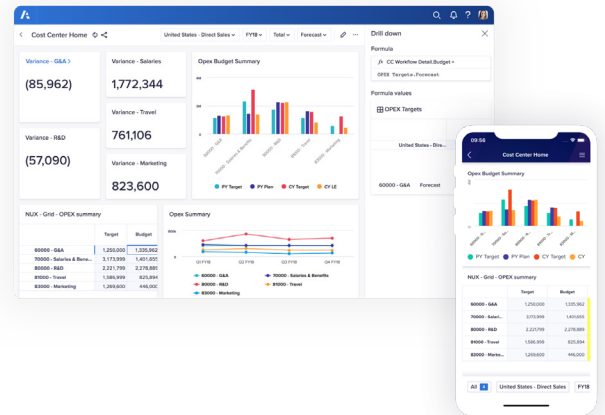
With Anaplan's easy-to-use platform, business leaders can make better, faster decisions across any device and any solution with ease and confidence.

Elevate planning into an enterprise-wide conversation

Anaplan's new UX combines the capabilities of its user interface, Home, Mobile, and Workflow features to intuitively guide people to the right places at the right time across all devices and solutions.

Welcome to your new home

With Anaplan's newly redesigned home screen, planning never looked so good or felt so personal. You'll take advantage of customized views with key performance metrics and multidimensional reports that give you the critical information you need right when you need it the most.



Modern, sleek user interface

Update plans quickly, visualize impacts immediately, and make decisions confidently with Anaplan's intuitive user interface. Visually impactful, highly customized views and reports provide you with insightful planning and analysis for every business unit throughout the enterprise.

With the customizable features of the Anaplan user interface, planning becomes a personalized experience for every planner and for every team in the organization.

Collaborate and execute seamlessly in context

Empower cross-functional teams to easily engage in contextual discussions and execute faster with Anaplan Collaboration. With Collaboration capabilities, teams can loop in key collaborators at the right time in the planning process to drive faster decision-making across the enterprise.

Teams can easily share boards and worksheets with colleagues and add comments to about specific data. With notifications across any device, teams can prompt swift action and align fast on the go.

Responsive multi-device application

In a high-touch, high-tech, and disruptive world, decision-makers need to stay connected to their solutions in and out of the office. That's never been easier with the Anaplan platform; planners can take confident decision-making on the go.

Highly responsive and highly secure with a modern UX that spans across devices, the Anaplan platform can be deployed via desktop, tablets, and native mobile apps for iOS and Android. View KPIs, receive alerts, and make timely changes and updates easily and on-the-fly.

A planning platform built for the people by the people

Anaplan's Connected Planning platform elevates planning into a conversational, inclusive process that instinctively takes place throughout every level of the enterprise. Its engaging user experience transforms planning into a collaborative, actionable, and effortless team sport. As a result, enterprise-wide participation and collaboration broadens, business impacts are immediately visualized, and the planning experience—for every user and every team—becomes intuitive and highly personalized.



Bring more people and key stakeholders into the planning process at the right times.



Empower planners with an intuitive, self-service solution that they can use immediately without expensive training.



Leverage data-rich dashboards and analysis to innovate and deliver business capabilities faster.



Eliminate complexity to make it simple and efficient for more people to do more high-value activities.

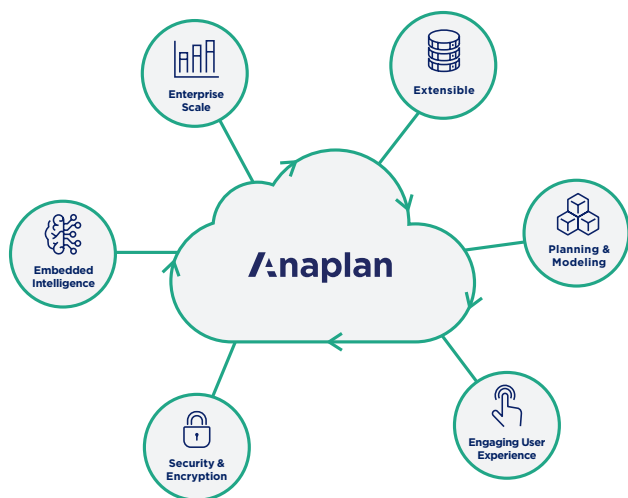


Remove manual processes to respond to business changes faster and make decisions more confidently.



Keep up the pace without missing a beat with highly secure, multi-device planning accessibility.

Anaplan Platform



Enterprise scale

The Anaplan platform connects your entire enterprise, scaling as you grow and handling real-time changes at any size. Calculations stay consistent and rapid for all data sets and any number of users.

Extensible

The Anaplan platform collects and analyzes data in a single location, enabling both high-level and granular analyses and facilitating data-sharing with all stakeholders. APIs, ETL connectors, and built-in integrations easily communicate with other solutions.

Planning and modeling

Our in-memory Hyperblock® engine enables multi-dimensional scenario modeling with unlimited constraints, allowing companies to model even the most complicated business scenarios and stay ahead of changes in the market. The platform maintains 100% consistency across all model changes.

Engaging user experience

The Anaplan user experience puts the whole enterprise on a single platform. Model-building is intuitive and requires zero coding knowledge. The whole company shares real-time data across devices and solutions, enabling rapid decision-making and unprecedented flexibility.

Security and encryption

Robust protection keeps your business's data safe. Best-in-class security and compliance include BYOK, role-based access control, user management, SSO support with SAML 2.0 compliance, and data encryption at rest.

Embedded intelligence

Embedded optimization including Optimizer™, over thirty predictive algorithms, and evolving AI capabilities transform complicated inputs into actionable recommendations. Machine learning intelligence speeds up decision-making across use cases.

ABOUT ANAPLAN

Anaplan is driving a new age of connected planning. Large and fast-growing organizations use Anaplan's cloud platform in every business function to make better-informed plans and decisions to drive faster, more efficient planning processes. Anaplan also provides support, training, and planning advisory services.

To learn more, visit anaplan.com